



# HYDRAULIC PRODUCTS



WE HELP YOU SEE YOUR IDEAS WORK



VANE PUMPS						
Model No.	Max. Pr.		Max. Displacement		Max. Speed rpm	Mounting Standard
	psi	bar	in <sup>3</sup> /rev	cm <sup>3</sup> /rev		
<b>Single Vane Pumps - Fixed Displacement</b>						
VTXB1	3000	210	0.40 - 2.80	6 - 46	2500	SAE-A
VTXB2	3000	210	0.40 - 2.80	6 - 46	2500	SAE-B
VT6B	3500	240	0.40 - 2.42	6 - 40	2500	SAE-A
VT6B2	3500	240	0.40 - 2.42	6 - 40	2500	SAE-B
VT6C	4000	275	0.66 - 6.10	11 - 100	2800	SAE-B
VT6CSH	4000	275	0.66 - 6.10	11 - 100	2800	SAE-B
VT6CP	4000	275	0.66 - 6.10	11 - 100	2800	SAE-C
VT6GC	4000	275	0.66 - 6.10	11 - 100	2800	R.17-102
VT6D	3500	240	2.90 - 11.62	48 - 190	2500	SAE-C
VT6E	3500	240	8.07 - 16.40	132 - 270	2200	SAE-C
VT7BS	4650	320	0.35 - 3.05	6 - 50	3600	SAE-B
VT7QC1	4350	300	0.66 - 6.10	11 - 100	3000	SAE-B
VT7QC2	4350	300	0.66 - 6.10	11 - 100	3000	SAE-C
VT7DS	4350	300	2.68 - 9.64	44 - 158	3000	SAE-C
VT7ES	3500	240	8.07 - 16.40	132 - 270	2200	SAE-C
<b>Double Vane Pumps - Fixed Displacement</b>						
VTXBB1	3000	210	0.8 - 5.6	12 - 92	2500	SAE-A
VTXBB2	3000	210	0.8 - 5.6	12 - 92	2500	SAE-B
VT6BB	3500	240	0.79 - 5.61	12 - 92	2500	SAE-B
VT6CB	4000	275	1.05 - 8.52	17 - 140	2500	SAE-B
VT6CC	4000	275	1.32 - 12.20	22 - 200	2800	SAE-B
VT6CCSH	4000	275	1.32 - 12.20	22 - 200	2800	SAE-B
VT6CCZ	4000	275	1.32 - 12.20	22 - 200	2800	SAE-C
VT6GCC	4000	275	1.32 - 12.20	22 - 200	2800	R.17-102
VT6DC	4000	275	3.56 - 17.75	59 - 290	2500	SAE-C
VT6DDS	3500	240	5.80 - 23.30	96 - 380	2500	SAE-C
VT6EC	4000	275	8.73 - 22.56	143 - 370	2200	SAE-C
VT6ED	3500	240	11.0 - 28.06	180 - 460	2200	SAE-C
VT6EE / EES	3500	240	16.1 - 32.94	264 - 540	2200	ISO / SAE-E
VT67BB	4350	300	0.35 - 3.05	12 - 100	2800	SAE-B
VT67CB	4350	300	1.01 - 9.15	17 - 150	2800	SAE-B
VT67DB	4350	300	3.25 - 14.70	54 - 240	2500	SAE-C
VT67EB	4350	300	8.42 - 19.45	138 - 320	2200	SAE-C
VT67EC	4000	275	8.73 - 22.50	143 - 370	2200	SAE-C
VT7BBS	4650	320	0.67 - 6.10	12 - 100	3600	SAE-B
VT7QCC1	4350	300	1.32 - 12.20	22 - 200	3000	SAE-B
VT7QCC2	4350	300	1.32 - 12.20	22 - 200	3000	SAE-C
VT7DBS	4350	300	3.03 - 12.69	50 - 208	2500	SAE-C
VT7QDC	4350	300	3.34 - 15.74	55 - 258	2500	SAE-C
VT7DDS	3600	250	5.36 - 19.28	88 - 316	2500	SAE-C
VT7EBS	4350	300	8.42 - 19.45	138 - 319	2200	SAE-C
VT7QEC	4350	300	8.73 - 22.56	143 - 370	2200	SAE-C
VT7EDS	3600	250	10.7 - 26.00	176 - 427	2200	SAE-C
VT7EE / EES	3500	240	16.1 - 32.80	264 - 540	2200	ISO / SAE-E
<b>Triple Vane Pumps - Fixed Displacement</b>						
VT6CBB	4000	275	1.46 - 11.70	23 - 180	2500	SAE-B
VT6CCB	4000	275	1.72 - 15.00	28 - 240	2500	SAE-B
VT6DCB	4000	275	3.96 - 20.50	65 - 330	2500	SAE-C
VT6DCC	4000	275	4.22 - 23.94	70 - 390	2500	SAE-C
VT6DDCS	4000	275	6.46 - 29.34	107 - 480	2500	SAE-C
VT6EDCS	4000	275	11.63 - 34.15	191 - 560	2200	SAE-E
VT67DBB	4350	300	3.59 - 17.75	60 - 290	2500	SAE-C
VT67DCB	4350	300	3.91 - 20.80	64 - 341	2200	SAE-C
VT67DCC	4000	275	4.00 - 21.84	66 - 358	2200	SAE-C
VT67DDCS	4000	275	6.00 - 25.38	99 - 416	2200	SAE-C
VT67EDB	4350	300	11.28 - 31.11	186 - 510	2500	ISO3019-2
VT67EDC	4000	275	11.41 - 32.14	187 - 528	2200	ISO3019-2
VT7DBBS	4350	300	3.35 - 15.74	56 - 258	2500	SAE-C
VT7QDCB	4350	300	3.66 - 18.90	61 - 308	2500	SAE-C
VT7QDCC	4000	275	3.96 - 21.84	66 - 358	2500	SAE-C
VT7DDBS	4350	300	5.67 - 22.33	94 - 366	2500	SAE-C
VT7EDBS	4350	300	11.10 - 29.10	182 - 478	2200	SAE-E
VT7QEDCS	4350	300	11.34 - 32.15	187 - 528	2200	SAE-E

### Drive Train Vane Pumps - Fixed Displacement

Model No.	Max. Pr.		Max. Displacement		Max. Speed rpm	Mounting Standard
	psi	bar	in <sup>3</sup> /rev	cm <sup>3</sup> /rev		
VT6CR	4000	275	0.66 - 6.10	11 - 100	2800	SAE-B
VT6DR	3500	240	2.90 - 11.65	48 - 190	2500	SAE-C
VT6ER	3500	240	8.07 - 16.40	132 - 270	2200	SAE-C
VT6DCCR	4000	275	4.22 - 23.84	70 - 390	2500	SAE-C
VT6EDCR	4000	275	11.63 - 34.15	191 - 560	2200	ISO3019-2
VT6EES	3500	240	16.1 - 32.80	264 - 540	2200	SAE-E
VT7EES	3500	240	16.1 - 32.80	264 - 540	2200	SAE-E

NOTE :- 1. PUMPS ARE AVAILABLE IN INDUSTRIAL AND MOBILE DUTY TYPES AND ALSO WITH DOUBLE SHAFT SEALS.  
2. PUMPS ARE ALSO AVAILABLE WITH ISO-3019-2 MOUNTING STANDARD.

### VST7 SILENT VANE PUMPS

Model No.	Max. Pr.		Max. Displacement		Max. Speed rpm	Mounting Standard
	psi	bar	in <sup>3</sup> /rev	cm <sup>3</sup> /rev		
<b>Single Vane Pumps - Fixed Displacement</b>						
VST7B	3000	210	0.354 - 2.50	5.8- 41.0	2500	SAE B
VST7C	3500	240	0.348 - 4.84	5.7- 49.3	2200	SAE J 744 / SAE C
VST7D	3500	240	2.680 - 9.63	43.9 - 157.9	2500	SAE J 744 / SAE C
VST7E	3500	240	8.07 - 16.39	132.3 - 268.7	2200	SAE J 744 / SAE C
<b>Double Vane Pumps - Fixed Displacement</b>						
VST7CC	3500	240	0.348 - 4.84	5.7 - 79.3	2200	SAE J 744 / SAE C
VST7DB	3500	240	0.348 - 9.63	5.7 - 157.9	2500	SAE J 744 / SAE C
VST7DC	3500	240	0.348 - 9.63	5.7 - 157.9	2500	SAE J 744 / SAE C
VST7EB	3500	240	0.348 - 16.39	5.7 - 268.7	2200	SAE J 744 / SAE C
VST7EC	3500	240	0.348 - 16.39	5.7 - 268.7	2200	SAE J 744 / SAE C
VST7ED	3500	240	2.68 - 16.39	43.9 - 268.7	2200	SAE J 744 / SAE C
<b>Triple Vane Pumps - Fixed Displacement</b>						
VST7CBB	3500	240	0.348 - 4.84	5.7 - 79.3	2500	SAE B
VST7DBB	3500	240	0.348 - 9.63	5.7 - 157.9	2500	SAE C
VST7DCC	3500	240	0.348 - 9.63	5.7 - 157.9	2500	SAE C
VST7ECB	3500	240	0.348 - 16.39	5.7 - 268.7	2200	ISO 3019-2/250 B4 HW
VST7EDB	3500	240	0.348 - 16.39	5.7 - 268.7	2200	ISO 3019-2/250 B4 HW
VST7EDC	3500	240	0.348 - 16.39	5.7 - 268.7	2200	ISO 3019-2/250 B4 HW

### AXIAL PISTON PUMPS - J9V Series

#### VARIABLE VOLUME SWASH PLATE DESIGN FOR OPEN LOOP APPLICATIONS

Max. Working Pressure : 280 bar  
 Drive Shaft : Wide variety of splined /keyed shaft options to meet SAE and DIN standards  
 Controls : Pressure, Flow & Power

MODELS	Max. DISP. cm <sup>3</sup> /rev	SUCTION PORT	DELIVERY PORT	MOUNTING FLANGE
J9V009	9	M27X2, 1 1/16-12UNF	M27X2, 1 1/16-12UNF	SAE 82-2(A) ISO-3019/2
J9V018	18	1" SAE	3/4" SAE	SAE 82-2(A) ISO-3019/2
J9V027	27	1 1/4" SAE	3/4" SAE	SAE101-2(B) ISO-3019/2
J9V045	45	1 1/2" SAE	1" SAE	SAE101-2(B) ISO-3019/2
J9V072	72	2" SAE	1 1/4" SAE	SAE127-4(C) ISO-3019/2
J9V099	100	2 1/2" SAE	1 1/4" SAE	SAE127-2(C) ISO-3019/2
J9V0135	140	2 1/2" SAE	1 1/4" SAE	SAE152-4(D) ISO-3019/2





### AXIAL PISTON PUMPS - VP Series

- Maximum continuous working pressure upto 350 bar.
- Compact & lightest design for its size and suitable for Mobile, Marine & Industrial equipment usage.
- Displacement control is by rotary servo with pressure compensator overrides.
- Rocker displacement control reduces size and lowers noise.
- Barrel bearing reduces barrel face loads & wear and extends temperature / speed range.
- Maximum speed 3000 rpm (VP6V & VP7V) & 2400 rpm (VP11V & VP14V)

Models	Max. Disp. cm <sup>3</sup> /rev	Suction Port	Delivery Port	Mounting Flange
VP6V	98	2" SAE	1½" SAE	SAE127-2(C)
VP7V	119	2" SAE	1½" SAE	SAE152-4(D)
VP11V	180	2½" SAE	1½" SAE	SAE152-4(D)
VP14V	229	2½" SAE	1½" SAE	SAE152-4(D)

### VARIABLE VOLUME VANE PUMPS

Models	Flow @ 1500rpm (l/min)	Pressure Adjusting Range (kgf/cm <sup>2</sup> )	Suction Port	Delivery Port	Mounting Flange Details	Shaft Dia.
JPVR 1 10	10	10-20 10-35 10-55 10-70	BSP 1/2"	BSP 3/8"	Ø82.55 2 BOLT	Ø12.7-h6
JPVR 1 17	17		BSP 1/2"	BSP 3/8"	Ø82.55 2 BOLT	Ø12.7-h6
JPVR 1 25	25		BSP 3/4"	BSP 1/2"	Ø95.02 4 BOLT	Ø19.05-h6
JPVR 1 35	35		BSP 3/4"	BSP 1/2"	Ø95.02 4 BOLT	Ø19.05-h6

### VANE MOTORS

Model No.	Max. Pr.		Max. Displacement		Max. Speed rpm	Torque Nm / bar	Mounting Standard
	psi	bar	in <sup>3</sup> /rev	cm <sup>3</sup> /rev			
VM3B/VM3B1	3000	210	0.54 - 2.26	9 - 37	4000	0.15 - 0.58	SAE-A
VM4C/VM4C1	2500	175	1.49 - 4.89	24 - 80	4000	0.39 - 1.27	SAE-B
VM4SC/VM4SC1	3340	230	1.49 - 4.89	24 - 80	4000	0.39 - 1.27	SAE-B
VM4D/VM4D1	2500	175	3.97 - 8.81	65 - 144	4000	1.04 - 2.30	SAE-C
VM4SD/VM4SD1	3340	230	3.97 - 8.81	65 - 144	4000	1.04 - 2.30	SAE-C
VM4E/VM4E1	2500	175	9.67 - 13.55	158 - 222	3600	2.52 - 3.53	SAE-C
VM4SE/VM4SE1	3340	230	9.67 - 13.55	158 - 222	3600	2.52 - 3.53	SAE-C

### SYSTEM SAVERS

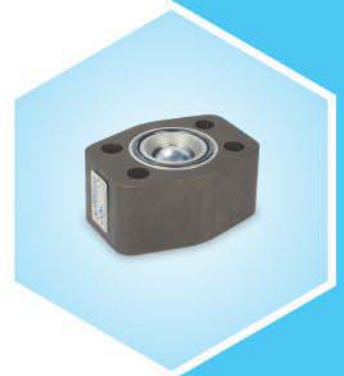
Type	Max. Pr.		Max. Displacement		Max. Speed rpm
	psi	bar	in <sup>3</sup> /rev	cm <sup>3</sup> /rev	
Single Vane Pumps	4650	320	0.39 - 16.47	6.50 - 270	3600
Model No's:	VT6B, VT7B/VT7BS, VT6C, VT6QC, VT6CSH, VT6D, VT7D/VT7DS, VT6E, VT7E/VT7ES				
Double Vane Pumps	4650	320	0.79 - 32.94	13 - 540	3000
Model No's:	VT6CC, VT7QCC, VT7BB/VT7BBS, VT6DC, VT7QDC, VT7DB/VT7DBS, VT6EC, VT7EB, VT6ED, VT7ED/VT7EDS, VT6DDS, VT7DD/VT7DDS, VT6EE/VT6EES, VT7EE/VT7EES, VT67CB, VT67DB, VT67EB				
Triple Vane Pumps	4350	300	1.40 - 32.15	23 - 527	2500
Model No's:	VT6CBB, VT6CCB, VT6DCC, VT6DDCS, VT6EDC, VT7DDB/VT7DDBS, VT7EDB/VT7EDBS				

HYDRAULIC VALVES							
Series	Size		Max. flow		Max. Pr.		Mounting Options
	in	mm	gpm	lpm	psi	bar	
<b>Pressure Controls</b>							
VR4* 03	3/8"	10	24	90	5000	350	Subplate / Threaded / Cartridge
VR4* 06	3/4"	20	80	300	5000	350	Subplate / Threaded / Cartridge
VR4* 10	1 1/4"	32	159	600	5000	350	Subplate / Threaded / Cartridge
VR5* 06	3/4"	20	24	90	5000	350	Flange
VR5* 08	1"	25	80	300	5000	350	Flange
VR5* 10	1 1/4"	32	159	600	5000	350	Flange
VR5* 12	1 1/2"	38	159	600	5000	350	Flange
VR1E02	1/4"	6	1.7	6.6	5000	350	Subplate / Panel / Foot / Cartridge
VV01	-	-	1	3.8	5000	350	Stackable (vent valve)

\* V - Relief, U - Unloader, S - Sequence, R - Reducing

Series	Size		Max. flow		Max. Pr.		Mounting Options
	in	mm	gpm	lpm	psi	bar	
<b>Check Valves</b>							
VIC03	3/8"	10	13	50	4500	315	Threaded
VIC06	3/4"	20	53	200	4500	315	Threaded
VIC10	1 1/4"	32	106	400	4500	315	Threaded
VC4V03	3/8"	10	48	180	5000	350	Subplate / Threaded / Cartridge
VC4V06	3/4"	20	95	360	5000	350	Subplate / Threaded / Cartridge
VC4V10	1 1/2"	38	119	450	5000	350	Subplate / Threaded / Cartridge
VC5V06	3/4"	20	26	100	3050	210	Flange (Poppet & Ball Type)
VC5V08	1"	25	53	200	3050	210	Flange (Poppet & Ball Type)
VC5V10	1 1/4"	32	106	400	3050	210	Flange (Poppet & Ball Type)
VC5V12	1 1/2"	38	198	750	3050	210	Flange (Poppet & Ball Type)
VC5V16	2"	50	198	750	3050	210	Flange (Poppet & Ball Type)
<b>Pilot Operated Check Valves</b>							
VC4V03	3/8"	10	48	180	5000	350	Subplate / Threaded / Cartridge
VC4V06	3/4"	20	95	360	5000	350	Subplate / Threaded / Cartridge
VC4V10	1 1/2"	38	119	450	5000	350	Subplate / Threaded / Cartridge
<b>Air Bleed Off Valve</b>							
VAB04	1/4"	6	-	-	5000	350	Threaded

Series	Type	Size		Max. flow		Max. Pr.		Mounting Options
		in	mm	gpm	lpm	psi	bar	
<b>Seat Valves - On/Off</b>								
VD4S03	Body Type	3/8"	10	47	180	5000	350	Subplate / Threaded
VD4S06	Body Type	1"	25	95	360	5000	350	Subplate / Threaded
VD4S10	Body Type	1 1/2"	38	158	600	5000	350	Subplate / Threaded
VD5S03	2/3 Port	3/4"	10	24	90	5000	350	SAE Flange
VD5S06	2/3 Port	1"	25	80	300	5000	350	SAE Flange
VD5S08	2/3 Port	1 1/4"	32	158	600	4000	280	SAE Flange
VD5S10	3 Port	1 1/2"	38	158	600	5000	350	SAE Flange
VCID / VCIC	Cavity as per DIN - 24342	1/2"	16	53	200	5000	350	Cartridge
VCID / VCIC		1"	25	119	450	5000	350	Cartridge
VCID / VCIC		1 1/4"	32	198	750	5000	350	Cartridge
VCID / VCIC		1 1/2"	40	330	1250	5000	350	Cartridge
VCID / VCIC		2"	50	528	2000	5000	350	Cartridge
VCID / VCIC		2 1/2"	63	792	3000	5000	350	Cartridge
VCAR4	Cavity as per	1/2"	12	47	180	5000	350	Cartridge
VCAR2	VELJAN std.	1 1/2"	38	158	600	5000	350	Cartridge
<b>Stack Valves</b>								
VZDV03	Pressure Relief	1/4"	6	16	60	5000	350	CETOP 03
VZDV05		3/8"	10	32	120	4500	315	CETOP 05
VZDV08		3/4"	20	110	500	4500	315	CETOP 08
VZDR03	Pressure Reducing	1/4"	6	16	60	5000	350	CETOP 03
VZDR05		3/8"	10	32	120	4500	315	CETOP 05
VZRD03	Throttle with Check	1/4"	6	16	60	5000	350	CETOP 03
VZRD05		3/8"	10	32	120	4500	315	CETOP 05
VZRD08		3/4"	20	110	500	4500	315	CETOP 08
VZRE03	Check (Pilot Operated)	1/4"	6	16	60	5000	350	CETOP 03
VZRE05		3/8"	10	32	120	4500	315	CETOP 05
VZRE08		3/4"	20	110	500	4500	315	CETOP 08
VZRV03	Check (Direct Operated)	1/4"	6	11	40	5000	350	CETOP 03
VZRV05		3/8"	10	26	100	4500	315	CETOP 05





Series	Size		Max. flow		Max. Pr.		Mounting Options
	in	mm	gpm	lpm	psi	bar	
<b>Inline Throttle Valves</b>							
VITC03	3/8"	10	13	50	4500	315	Threaded
VITC06	3/4"	20	53	200	4500	315	Threaded
VITC10	1 1/4"	32	106	400	4500	315	Threaded
<b>Throttle without Check Valve</b>							
VDV7 06	3/8"	10	25	95	5000	350	Subplate / Threaded
VDV7 08	1/2"	12	25	95	5000	350	Subplate / Threaded
VDV7 12	3/4"	18	50	190	5000	350	Subplate / Threaded
VDV7 16	1"	25	50	190	5000	350	Subplate / Threaded
VDV7 20	1 1/4"	32	119	450	5000	350	Subplate / Threaded
VDV7 24	1 1/2"	38	119	450	5000	350	Subplate / Threaded
<b>Throttle with Check Valve</b>							
VDRV7 06	3/8"	10	25	95	5000	350	Subplate / Threaded
VDRV7 08	1/2"	12	25	95	5000	350	Subplate / Threaded
VDRV7 12	3/4"	18	50	190	5000	350	Subplate / Threaded
VDRV7 16	1"	25	50	190	5000	350	Subplate / Threaded
VDRV7 20	1 1/4"	32	119	450	5000	350	Subplate / Threaded
VDRV7 24	1 1/2"	38	119	450	5000	350	Subplate / Threaded
<b>Flow Controls (Pressure &amp; Temperature compensated)</b>							
V2FIC 02	3/8"	10	13	52	4000	280	Subplate
V2FIC 03	3/4"	20	29	110	5000	350	Subplate

<b>DIRECTIONAL CONTROL VALVES</b>							
Series	Size		Max. flow		Max. Pr.		Mounting Options
	in	mm	gpm	lpm	psi	bar	
V4D01	1/4"	6	24	90	5000	350	Subplate
V4D02	3/8"	10	32	120	4600	315	Subplate
*V4D03	5/8"	16	80	300	5000	350	Subplate
V4D06	3/4"	20	185	700	5000	350	Subplate
V3D06	3/4"	20	132	500	5000	350	Subplate

\* Will be available from a later date.

<b>MOBILE DIRECTIONAL CONTROL VALVE</b>			
Model	V20		V40
Flow rate capacity	80 lpm		150 lpm
Operating Pressure (Cont.)	3500PSI(242 bar)		5000PSI(350 bar)
Operating Temperature	-13°F(-25°C)to+176°F(+80°C)		-13°F(-25°C)to+176°F(+80°C)
Standard Port Sizes	SAE		ISO-228    ISO-725
Inlet	SAE 12		G-3/4" BSP    1 1/16"-12 UNF
Outlet	SAE 12		G-1" BSP    15/16"-12 UNF
Power beyond	SAE 12		G-1" BSP    15/16"-12 UNF
Work port	SAE 10		G-3/4" BSP    11/16"-12 UNF
Optional Port Threads	BSP / Metric		Metric
Operating Fluid	Mineral oil (Petroleum based)		
Viscosity	60-1000SSU(10-216cSt)		60-1000SSU(10-216cSt)
O-Ring seals	Buna-N (Optional Viton)		
Filtration required	10 microns(nominal)		
Number of work sections	1 to 8		1 to 12
Spool Stroke	6.2 mm		7.1 mm
Inlet Cover	2.3 kg		4.7 kg
Outlet cover	1.6 kg		4.5 kg
Work section (Manual)	2.8 kg (each)		4.8 kg (each)
Mounting Position	Not restricted		

HYDRAULIC CYLINDERS :					
Series	Bore Size in. (mm)		Max. Pr.		Features
	min	max	psi	bar	
HT	1½ (40)	12 (320)	2350	160	Conforms to ISO:6020 part-II/III Choice of 18 mounting styles Compact tie-rod design Nitrile/Viton/PTFE seals
HR	1½ (40)	12 (320)	2350	160	Conforms to ISO:6020 part-I Choice of 10 mounting styles Heavy mill duty design Nitrile/Viton/PTFE seals
HH	2 (50)	12 (320)	3674	250	Conforms to ISO:6022 Choice of 7 mounting styles Piston seal: Compact Nitrile rubber with "L"Shaped Poly-Acetal wear rings or PTFE Bronze sealing ring with 'O' ring Energiser or Chevron packing type. Rod Seals: Poly Urethane 'U' type or PTFE - Bronze ring with 'O' ring Energiser or Chevron packing type.
CHG	1½ (40)	8 (200)	2500	175	For mobile application. Flush design with threaded rod Gland and welded cap. Port piping as per customer need. Easy to service
SPECIAL	1½ (40)	32 (800)	7500	500	Custom built Stroke length upto 315" (8000mm) Double rod end/Duplex/Tandem cylinders Cylinders with stroke adjustment Cylinders with Linear transducers



LOW SPEED HIGH TORQUE HYDRAULIC MOTORS	
Pressure	210 - 320 bar
Speed	400 - 750 rpm
Torque	7.3 kgm to 310 kgm

HYDRAULIC POWER UNITS & MANIFOLDS
Design and manufacture of Hydraulic Power Packs and Manifolds as per requirements of customers. Specialised in supply of high pressure systems for Steel Mills, Sugar Industry, Textile Machinery, Material Handling, Food Processing etc.



Veljan is a pioneer Hydraulics and Pneumatics company in India and a leader in its own right.

Veljan has a wealth of experience in developing and manufacturing a wide range of Hydraulic and Pneumatic Products and systems for over 40 years now at its three manufacturing plants near Hyderabad. These plants are equipped with state-of-the-art production and test facilities and supported by a 500 – strong skilled workforce.

## HYDRAULICS :

### Pumps

- Vane :
- Fixed Displacement (Single / Double / Triple & Drive Train) 6 to 540 cc / rev and up to 320 bar pressure
  - Variable Displacement Vane (11 & 22 cc / rev)
- Piston :
- Variable Displacement Piston ( Swash plate design for Open loop) 9 to 140 cc/rev and up to 280 bar pressure

### Motors

- Vane :
- 5 to 811 Nm Torque and Max. Pressure 4000 rpm
- Roller Cam :
- 71 to 3040 Nm Torque & 400 to 750 rpm

### Pressure Controls

- Relief / Reducing / Unloader / Sequence Valves (up to 350 Bar pressure with threaded or flanged ports) 3/8" to 1 1/2"

### Check Valves

- Direct and Pilot operated (3/8" to 2")

### Throttle Valves

- With & without free return flow check valve (3/8" to 1 1/2")

### Flow Control Valves

- pressure and temperature compensated (3/8" to 3/4")

### Directional Control Valves

- Manual / Pilot and Solenoid operated (1/4" to 3/4")

### Mobile Valves

- 1 to 8 sections, 80 LPM flow and up to 242 bar pressure.

### Cartridge & Seat valves

- Manifolds and Complete Power packs

### Cylinders

- 40 to 1000 mm bore, up to 8500 mm stroke and 500 bar pressure Tie Rod, Mill Duty, Mobile Duty and Custom designs

## PNEUMATICS :

### FRLs

- 1/4" to 2"

### Cylinders

- Compact, ISO, Heavy Duty Tie Rod and Custom designs (10 - 500 mm Bore) and up to 17 bar pressure

### Rotary actuators

- 90° actuation

### 2/3/4-way DC Valves

- Spool (with & without seals), Poppet, Diaphragm & D-slide Designs. M5 and 1/8 to 1" size. Manual / Mechanical / Pilot & Solenoid Operators.

### Auxilliary Valves

- Flow Control, Non-Return, Shuttle, Quick Exhaust Etc.

### Presses

- C-frame and Column type

## SYSTEMS :

- Ship Stabilizers & Steering Gear and complete Turnkey Hydraulic /Pneumatic /Hydro Mechanical systems

With its own in-house product development & enhancement, expansion of product range is an ongoing process at Veljan to meet the market demands.

If you are looking for a reliable and an economical supplier to source your hydraulic & pneumatic products, think of Veljan.



Hydraulic Pumps & Motors Plant



Hydraulic Valves Plant



Hydraulic Cylinders & Naval Systems Plant



Pneumatics Plant

Note : Product details are liable to change without notice

© All Rights Reserved



**VELJAN HYDRAIR LIMITED**

Website : [www.veljan.in](http://www.veljan.in) E-mail : [export@veljan.in](mailto:export@veljan.in)